

Installation guide

OX 140 | OX 210 | OX 280

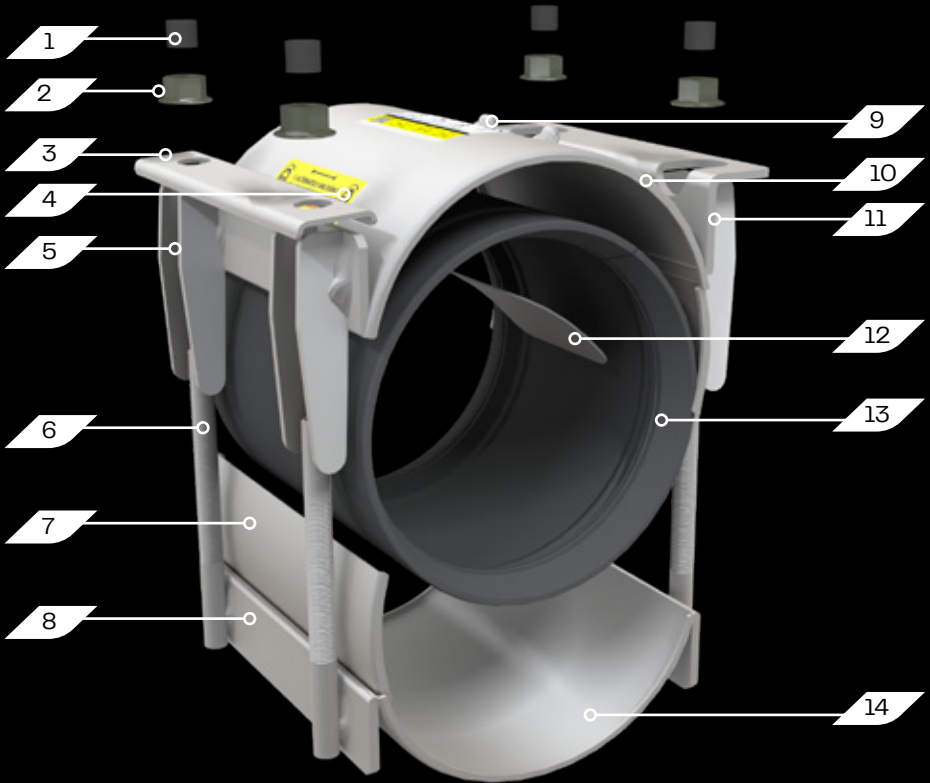
OX

by United Pipeline Products



Go for the flow

A GOOD FLOW STARTS
WITH AN EFFORTLESS
INSTALLATION



IMPORTANT

Always check that you have a correct and fully functional product before you start any excavations or repairs. When in doubt, take a spare unit with you to avoid any delay of your repair.

- | | | | |
|----|--------------|-----|------------------|
| 1. | Cap | 8. | Sidebar |
| 2. | Nut | 9. | Cap nut |
| 3. | Lifter bar | 10. | Casing |
| 4. | Label | 11. | R-bridge / hinge |
| 5. | Lug | 12. | Guidance plate |
| 6. | Bolt | 13. | Gasket |
| 7. | Bridge plate | 14. | Casing |

BEFORE INSTALLATION:

1. Check the diameter of the pipe and make sure you are using correct sized repair couplings.
2. Clean the pipe to remove as much dirt and corrosion as possible from the surface. Scrape the pipe to remove dirt and corrosion so that the surface is smooth.
3. Make sure no foreign materials stick to the gasket as it is wrapped around the pipe, nor becomes lodged between gasket and pipe as the nuts are tightened.
4. Keep threads free of foreign materials to facilitate tightening.
5. Use a torque wrench with the right wrench size to achieve proper torque.

INSTALLATION:

To **repair** follow blue steps,

To **couple** follow red steps.

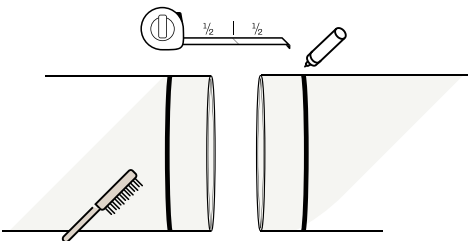
Some steps apply to both.

STEP 01

Thoroughly clean the pipe surface area to be covered by the repair coupling.

STEP 02

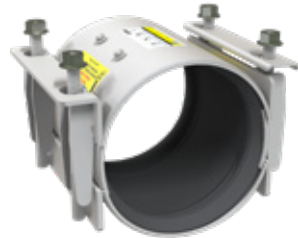
Mark the pipe on each side of the crack or gap where the ends of the repair coupling will be. After installation use these marks to confirm that the repair coupling has been properly positioned.



STEP 03

Back off nuts to end of bolts, but **DO NOT REMOVE THE NUTS**.

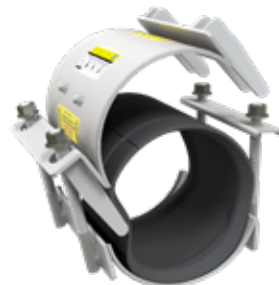
Note: If necessary (because of excessive leakage) steps 3-8 can be performed beside the pipe fracture or damage. Then slide the repair coupling over the fracture after snapping the bridge plate onto the lugs.



STEP 04

→ to couple continue with **STEP 08**

Open up the repair coupling on the side with the to be loosened bridge plate.



STEP 05

Remove the gasket out of the lower scale.



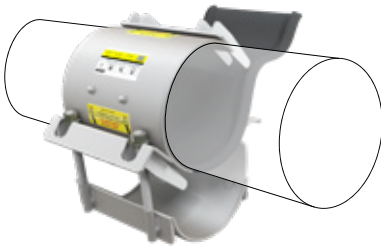
STEP 08

Slide the repair coupling over the crack or gap in between the pipe markings placed during step 2 to confirm that the repair coupling has been properly positioned.



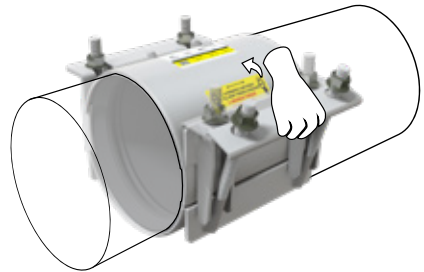
STEP 06

Hinge the upper scale onto the pipe.



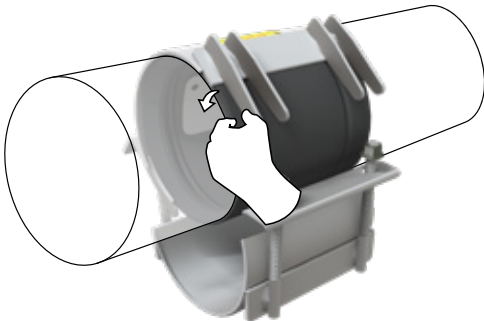
STEP 09

Snap the bridge plate over the lugs, do not use force.



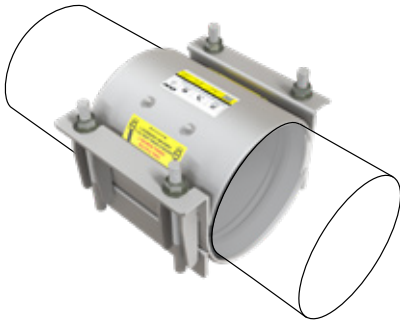
STEP 07

Apply the gasket around the pipe and put the end of the gasket between the upper scale and guidance plate. **Thoroughly press the gasket** in its place against the other gasket's end.



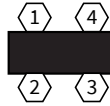
STEP 10

Tighten the nuts by hand first evenly and alternately.

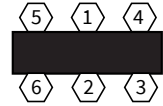


Always use specified order as given below (depending on coupling width):

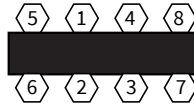
140 mm



210 mm

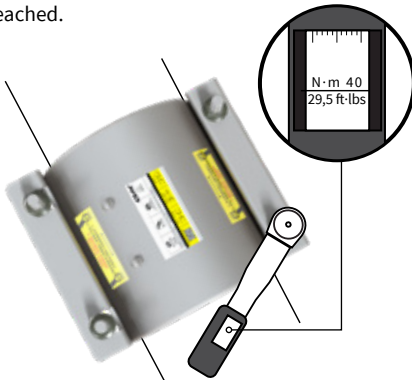


280 mm



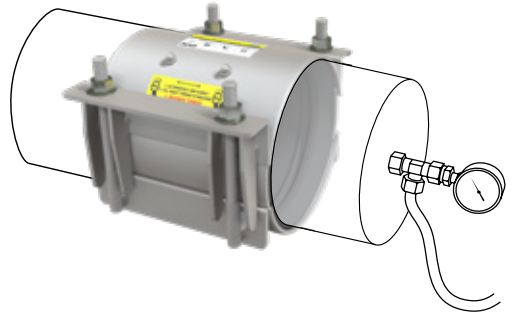
STEP 11

Tighten with a torque wrench all nuts evenly and alternately until the given torque given on the repair coupling's label has been reached.



STEP 12

Always pressure test for leaks.



WE'RE HAPPY TO SHOW YOU HOW IT'S DONE

You want a quick and easy fix. OX not only ensures a sound and durable coupling or repair, but is also easy to install. If mounted properly, the work is done in no time. On our website gofortheflow.com you can find a **video tutorial**.





OX is the answer to all
your pipeline joining and
repair needs.

Any further questions or projects
where we may be of assistance?
We're here for you.

United Pipeline Products
Kerkdijk-Zuid 11A
5492 HW Sint-Oedenrode
the Netherlands

+31 88 765 4400
sales@unitedpipelineproducts.com

gofortheflow.com